



**ROW, ROW, ROW YOUR ERG:** DBMS students take advantage of the rowing room in the new building. The new facility houses this training center as well as office space, locker rooms and classroom space.

Photo courtesy of David J Grossman / [www.gurnetroad.com](http://www.gurnetroad.com)

# Maritime school moves into new multi-use facility

continued from page one

2,500 square foot function room that overlooks Duxbury Bay.

"Things were inefficient," said DBMS Executive Director Chuck Leonard. "The idea was to combine everything in a multi-function building."

Getting the building ready for the Opening of the Bay was no easy task. School staff only moved into the building about a week before the festival, and some painting and other work was going on almost up to the opening. Leonard said, there will be a more official grand opening of the building later this summer.

"We've been working around construction guys and

painters," said DBMS's Linda Herrick. "We really scrambled to get everything together."

The end result of all that hard work, however, is a beautiful facility that will meet the needs of the school now and for the foreseeable future, as the building has room for expansion.

"We built it so we can grow into it," Leonard said.

Duxbury Bay Maritime School has between 250-300 students on the bay every day during the summer. The school was founded about 12 years ago, and Leonard gave the original executive director, Ned Lawson, credit for having the vision that led to the creation of the new building.

"He knew what he need-

ed," Leonard said. "He was an integral part of the design."

The DBMS offices were housed in a dilapidated building that was torn down on Tuesday. The school has seven permanent part-time employees and three full-time workers. In the summer, they hire about 90 instructors, some of whom live in a dormitory building next to the new facility.

"Our programs have expanded so much, we just needed more space," said Herrick.

Leonard said the school's focus was to create programs first and that the building space would follow.

"It's been a long time in the making," he said.

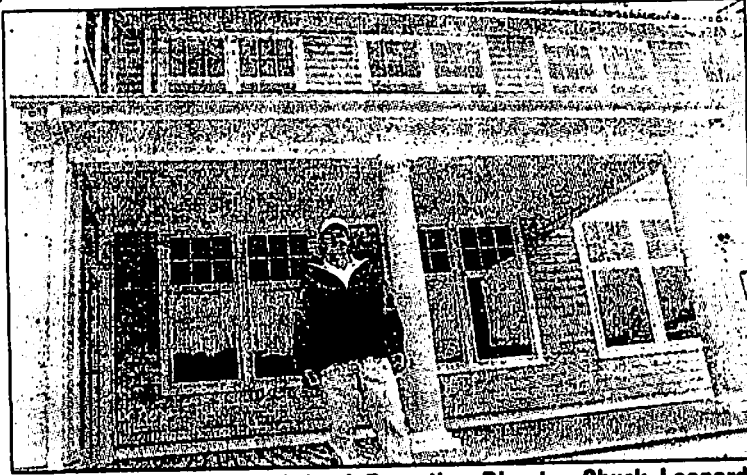
# New building on display at DBMS's Opening of the Bay ✓

By JUSTIN GRAEBER, CLIPPER EDITOR  
JUSTIN@DUXBURYCLIPPER.COM

Duxbury Bay Maritime School's annual Opening of the Bay festival served as a showcase for the school's new building.

The 19,000 square foot building replaced a tin shed that was used for storage only. The new building provides storage room for boats during the winter, classroom space, office space and locker rooms. The second floor also has a

continued on page 4



Duxbury Bay Maritime School Executive Director Chuck Leonard stands in front of the school's new 19,000 square foot multi-use facility, which will be open for the first time this summer.